

**SMS EMV S SERIES  
VIBRO HAMMERS**

**PRODUCT  
CATALOG**

**PILE DRIVER EQUIPMENT  
PRODUCER**

**MADE IN TURKEY**



**SMS EMV SERIES EXCAVATOR MOUNTED VIBRO HAMMERS**



The increasing use of hydraulic excavators in piling jobs, has motivated SMS to develop a complete range of Vibro hammers that are specifically designed to be mounted directly on the stick of a wide range of excavators.

SMS excavator mounted Vibro hammers allow to easily drive or extract a variety of profiles, such as:

- Sheet piles,
- H beams,
- Casings,
- Tubes with it's specially designed clamps
- Concrete piles and wooden piles.

With ergonomic design and high performance, various capacity **SMS Excavator Mounted Vibratory Hammers** provide long life pile driving application.

SMS Excavator mounted vibro hammers designed with high mobility and cost performance and can be used as attachments on the arms of hydraulic excavators. Unique designed **SMS S series excavator mounted vibratory hammers** are easily adapted to the excavator by connection bracket produced by SMS .

It features low vibration, low noise and high performance. It can be used under various working conditions such as narrow working spaces, passageways, farm roads and high-restricted places where a crane suspended vibro hammer can not be used, and crowded construction sites in urban districts or residential areas. They are hydraulically driven by the excavators and easily operated by excavator operator.

SMS S series excavator mounted vibro hammers does not need any modification or change on the excavators. SMS S series vibro hammers can be easily used with all types of pile by using the SMS range of hydraulic clamps and provides time and cost saving.



## SMS EMV S 10

STANDART SERIES EXCAVATOR MOUNTED VIBROHAMMERS	
S-10	
Eccentric Moment (Kgm)	0,7
Centrifugal Force (kN)	90
Devir/Speed (d/d) Max.	3000
Max. Pulling Force (kN)	36
Max. Pushing Force (kN)	34
Dynamic Weight (kg) (with clamp)	350
Weight (kg)	510
Total Length (mm)	885
Total Width (mm)	490
Total Height (mm)	1080
Debi/Flow (Lt/min)	100
Working Pressure (bar)	350
Güç / Power (kW)	60
Oil Pump	-
Number of Cylinders	-

## SMS EMV S 20



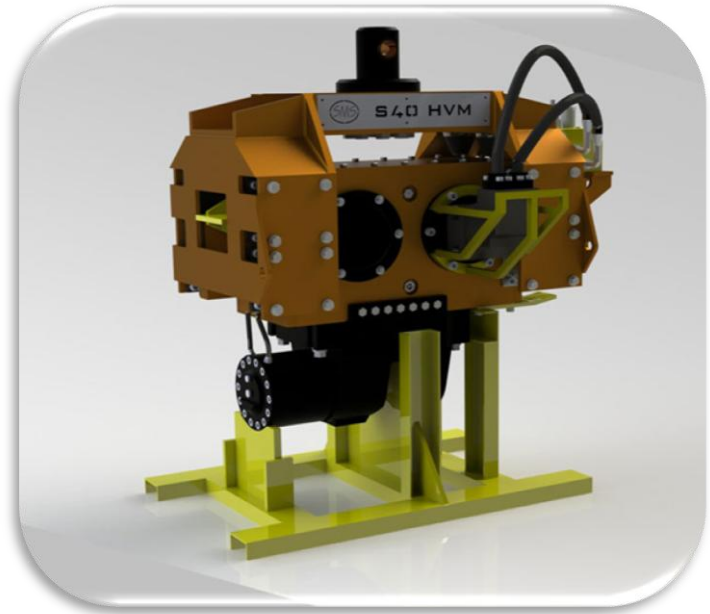
SMS EMV S 20	
Eksantrik Moment/Eccentric Moment (Kgm)	2,2
Santrafij Kuvveti/Centrifugal Force (kN)	250
Devir/Speed (d/d)	3150
Maksimum Çekme Kuvveti/Max. Pulling Force (kN)	60
Maksimum Çakma Kuvveti/Max. Pushing Force (kN)	40
Dinamik Ağırlık/Dynamic Weight (kg)	600
Ağırlık / Weight (kg)	850
Toplam Uzunluk/Total Length (mm)	1100
Toplam Genişlik/Total Width (mm)	1025
Toplam Yükseklik/Total Height (mm)	625
Debi/Flow (Lt/min)	95
Çalışma Basıncı / Working Pressure (bar)	300
Güç / Power (kW)	61
Hidromotor / Hydromotor	F12-30

# SMS EMV S 30



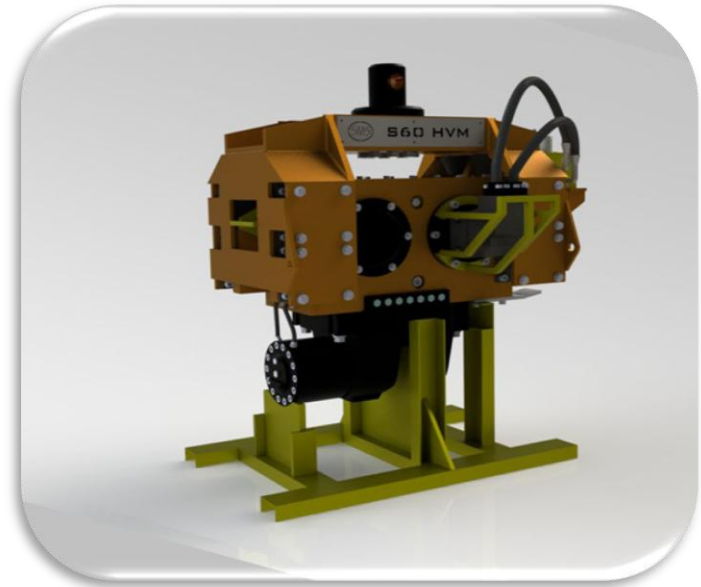
SMS EMV S 30	
Eksantrik Moment/Eccentric Moment (Kgm)	3
Santrafij Kuvveti/Centrifugal Force (kN)	310
Devir/Speed (d/d)	3000
Maksimum Çekme Kuvveti/Max. Pulling Force (kN)	60
Maksimum Çakma Kuvveti/Max. Pushing Force (kN)	40
Dinamik Ağırlık/Dynamic Weight (kg)	600
Ağırlık / Weight (kg)	850
Toplam Uzunluk/Total Length (mm)	1100
Toplam Genişlik/Total Width (mm)	1025
Toplam Yükseklik/Total Height (mm)	625
Debi/Flow (Lt/min)	120
Çalışma Basıncı / Working Pressure (bar)	300
Güç / Power (kW)	70
Hidromotor / Hydromotor	F12-40
Suitable Excavator Class	14-20 Tons
	-

# SMS EMV S 40



SMS EMV S S40	
Eccentric Moment (Kgm)	4
Centrifugal Force (kN)	370
Speed (d/d)	2800
Max. Pulling Force (kN)	120
Max. Pushing Force (kN)	80
Dynamic Weight (kg)	940
Total Weight (kg)	1230
Total Length (mm)	1000
Total Width (mm)	1400
Total Height (mm)	700
Flow (Lt/min)	171
Working Pressure (bar)	300
Power (kW)	85
Hydromotor	F12-60
Oil Pump	-

# SMS EMV S 60



<b>SMS EMV S 60</b>	
<b>Eccentric Moment (Kgm)</b>	<b>6</b>
<b>Centrifugal Force (kN)</b>	<b>440</b>
<b>Speed (d/d)</b>	<b>2500</b>
<b>Max. Pulling Force (kN)</b>	<b>120</b>
<b>Max. Pushing Force (kN)</b>	<b>80</b>
<b>Dynamic Weight (kg)</b>	<b>1000</b>
<b>Total Weight (kg)</b>	<b>1350</b>
<b>Total Length (mm)</b>	<b>1000</b>
<b>Total Width (mm)</b>	<b>1400</b>
<b>Total Height (mm)</b>	<b>750</b>
<b>Flow (Lt/min)</b>	<b>204</b>
<b>Working Pressure (bar)</b>	<b>300</b>
<b>Power (kW)</b>	<b>119</b>
<b>Hydromotor</b>	<b>F12-80</b>
<b>Oil Pump</b>	<b>-</b>
<b>Suitable Excavator Class</b>	<b>24-32 tons</b>



# SMS EMV S 70



<b>SMS EMV S 70</b>	
<b>Eccentric Moment (Kgm)</b>	<b>7</b>
<b>Centrifugal Force (kN)</b>	<b>560</b>
<b>Speed (d/d)</b>	<b>2700</b>
<b>Max. Pulling Force (kN)</b>	<b>150</b>
<b>Max. Pushing Force (kN)</b>	<b>80</b>
<b>Dynamic Weight (kg)</b>	<b>1000</b>
<b>Total Weight (kg)</b>	<b>1350</b>
<b>Total Length (mm)</b>	<b>1000</b>
<b>Total Width (mm)</b>	<b>1400</b>
<b>Total Height (mm)</b>	<b>750</b>
<b>Flow (Lt/min)</b>	<b>204</b>
<b>Working Pressure (bar)</b>	<b>300</b>
<b>Power (kW)</b>	<b>125</b>
<b>Hydromotor</b>	<b>F12-80</b>
<b>Oil Pump</b>	<b>-</b>
<b>Suitable Excavator Class</b>	<b>28-35 tons</b>

# SMS EMV S 80



SMS EMV S 80	
Eccentric Moment (Kgm)	8
Centrifugal Force (kN)	604
Speed (d/d)	2500
Max. Pulling Force (kN)	175
Max. Pushing Force (kN)	90
Dynamic Weight (kg)	1780
Total Weight (kg)	2150
Total Length (mm)	1190
Total Width (mm)	1650
Total Height (mm)	800
Flow (Lt/min)	275
Working Pressure (bar)	300
Power (kW)	165
Hydromotor	F12-110
Oil Pump	-
Suitable Excavator Class	32 tons and Over

# SMS EMV S 120



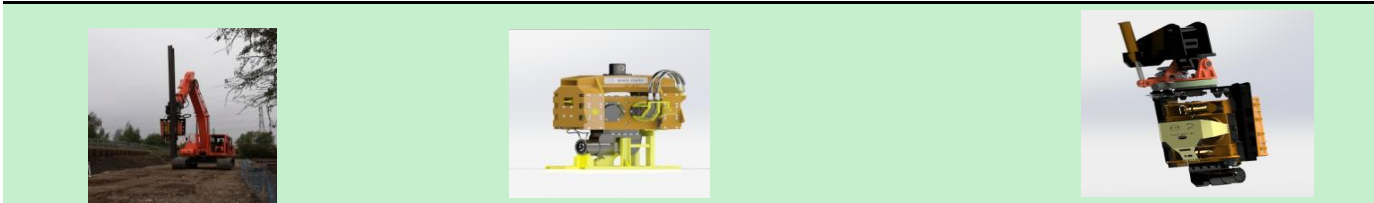
SMS EMV S 120	
Eccentric Moment (Kgm)	12,3
Centrifugal Force (kN)	750
Speed (d/d)	2350
Max. Pulling Force (kN)	180
Max. Pushing Force (kN)	160
Dynamic Weight (kg)	1500
Total Weight (kg)	2600
Total Length (mm)	1700
Total Width (mm)	1850
Total Height (mm)	475
Flow (Lt/min)	290
Working Pressure (bar)	300
Power (kW)	175
Hydromotor	F12-110
Oil Pump	-
Suitable Excavator Class	40 tons and over

# SMS EMV S SERIES

Using the table below, you can choose the most appropriate model from among the SMS EMV S SERIES.

The choice is based on the dimensional and tonnage characteristics of your excavator or your vehicle.

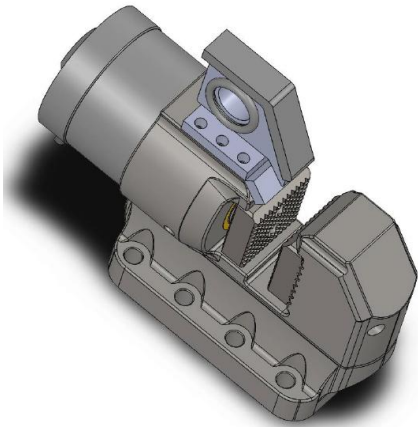
At the last choice, the engine size and hydraulic system of the excavator or the carrier will be decisive. (Oil pumps, flow rate, pressure and site and ground conditions to be used should be taken into consideration. )



EXCAVATOR TYPE	SMS S20	SMS S30	SMS S40	SMS S50	SMS S60	SMS S70	SMS S80	SMS S120
10 - 14 ton								
14 - 20 ton								
18-28 ton								
28 - 32 ton								
34 - 42 ton								
42 ton <								



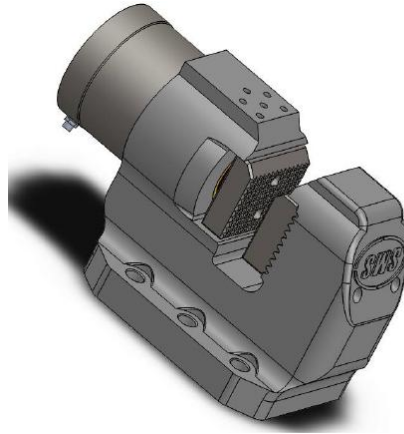
## STANDART SERIES CLAMP



**S-CN-450**

**45 TON**

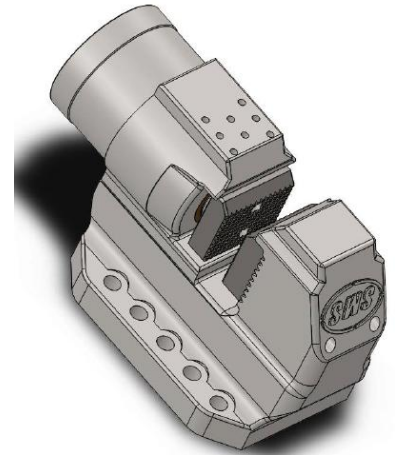
**300 BAR**



**S-CN-500**

**50 TON**

**300 BAR**



**S-CN-600**

**60 TON**

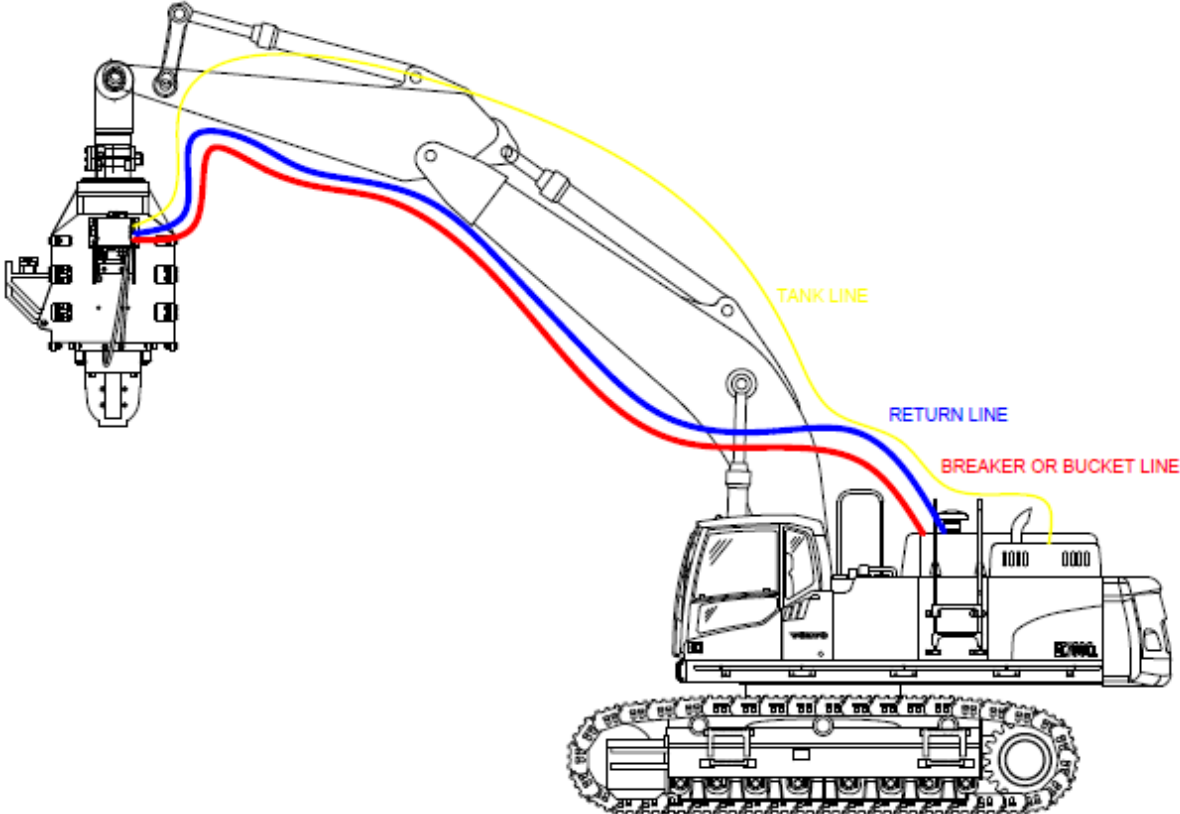
**300 BAR**

## HYDRAULIC SYSTEM

In our entire hydraulic system we use only Rexroth. The rexroth mark products are used on our own production valve block. All our models are working without compromising quality by using PARKER brand hydraulic motors



**S SERIES STANDART FREQUENCY EXCAVATOR MOUNTED MODEL**



## ATTACHMENTS



**EXTENSION ARM**



**CONNECTION FORK**









<http://sevenocean.com.tr/vibratory-hammers.html>

Phone : +902623356238

Mobile : +905546925751 (Watsaap)

[alkan@sevenocean.com.tr](mailto:alkan@sevenocean.com.tr)