



H-800

Vibratory Driver / Extractor

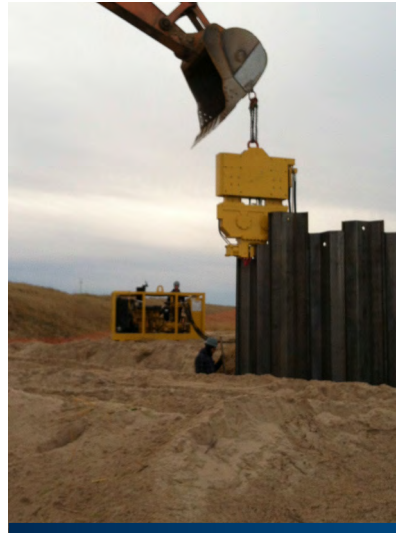
Vibrator Specifications

Type Hydraulic Horsepower	140
Eccentric Moment	800 In/lbs.
Frequency	1700 VPM
Amplitude	7/8 inch
Max line pull for extraction	15 ton
Pile clamping force height with head	57 ton
76 inch	
Throat width	14 inch
Length	40 inch
Weight with standard clamp	4500 lbs.
Optional Counterweight	3300 lbs.



Power Pac Specifications

Engine: John Deere	6068 TF
Rated BHP	170
Fuel tank capacity	62 Gallon
Hydraulic tank capacity	100 Gallon
Eccentric pump capacity	49 Gallon
Clamp pump capacity	8 GPM
Hydraulic filters	10 Micron
Length	110 inch
Width	42 inch
Height	55 inch
Weight	5000 lbs.



U.S. Patent No. 3,828,864 | We reserve the right to amend these specifications at any time without notice