

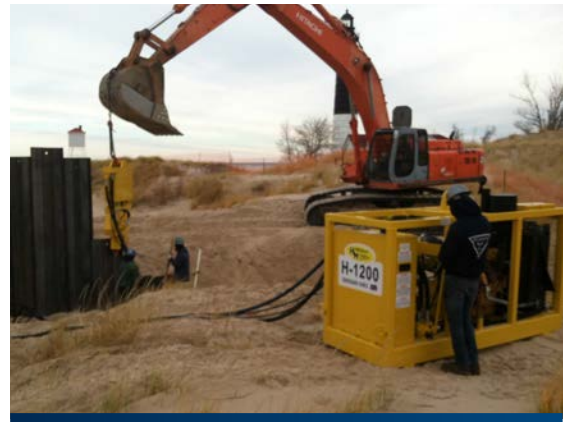


H-1200

Vibratory Driver / Extractor

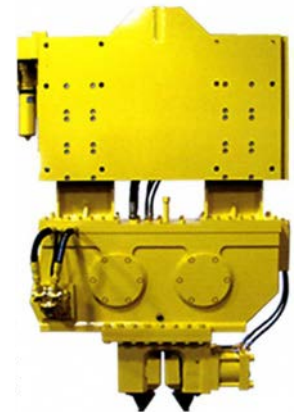
Vibrator Specifications

Type	Hydraulic
Hydraulic Horsepower	140
Frequency	1250 VPM
Amplitude	7/8 inch
Eccentric movement	1200 in. lbs.
Max line pull for extraction	20 ton
Optional max line pull	30 ton
Pile clamping force	57 ton
Height with head	99 inch
Length	55 inch
Throat Width	12 inch
Weight with standard clamp	5500 lbs.
Optional counterweight	3600 lbs.



Power Pac Specifications

Engine option	6068TF John Deere
Engine option	CAT C6.6 Acert 174HP
Rated HP	170
Fuel tank capacity	62 Gallon
Hydraulic tank capacity	100 Gallon
Eccentric pump capacity	60 G.P.M.
Clamp pump capacity	8 G.P.M.
Hydraulic filters	10 Micron
Length	110 inch
Width	42 inch
Height	55 inch
Weight	5000 lbs.



We reserve the right to amend these specifications at any time without notice