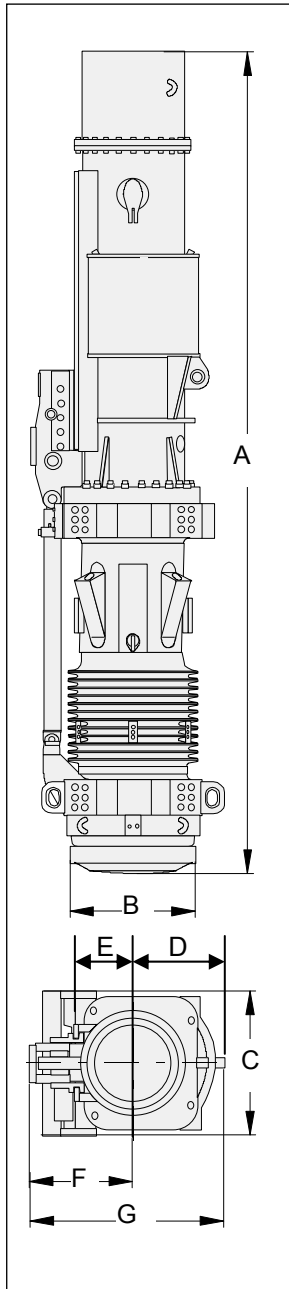




Specification Diesel Pile Hammer PILECO D225-22 for vertical and batter piling up to 1:2



Impact weight (piston) approx.	lbs.	49,612	
Energy per blow (adjustable)	ft.lbs	564,970 – 292,811	
Number of blows	bpm	36 - 50	
Batter piling forward & backward up to		1 : 2	
Consumption			
Diesel oil	gal/h	16.9	
Lube oil	gal/h	1.53	
Capacity			
Diesel oil tank	gal	121	
Lube oil tank	gal	26.4	
Weights			
Diesel pile hammer, approx.	lbs	100,328	
Tripping device	lbs	2,867	
Dimensions			
A length of hammer		26' 9.4"	
B Outer diam. of impact block		3' 9.4"	
C Width of diesel pile hammer		4' 4.6"	
Width for connection of guide jaws		3' 6.1"	
D Center of Diesel pile hammer up to the pump guard.		2' 3"	
E Center of Diesel pile hammer up to the center of threaded hole for fastening screws of guide jaws.		1' 5" / 1'8.4"	
F Center of Diesel pile hammer up to the tripping device.		2' 5.9"	
G Depth complete		5' 5.1"	
Powerpack Specifications	Max. operating pressure	psi	3,625
	Max. oil flow	gal/min	20
	Diesel engine	hp	66

PILECO, Inc.

P.O. Box 16099 – Houston, TX 77222 USA
 800-4PILECO (800-474-5326) – Tel: (713) 691-3000, Fax: (713) 691-0089
 E-mail: pileco@pileco.com – Web: www.pileco.com